

# Installation Instructions

## Introduction

Thank you for purchasing MITSUBISHI Integrated FA Software, MELSOFT series.

This document explains how to install and uninstall MT Works2<sup>(Note-1)</sup>. Please read carefully before installing the product to your personal computer. See also Setup Guidance (PDF file) in the CD-ROM, which explains how to set up the product.

(Note-1): "MELSOFT MT Works2", which is the package product of the motion controller engineering environment, includes the MT Developer2, which enables system design, programming, debugging and maintenance, and MR Configurator2, which enables servo parameter setting, servo adjustment and servo monitoring.

## Product Makeup

Model name	Product name	Quantity
SW1DNC-MTW2-E (English version package) (Standard license product)	MELSOFT MT Works2 product (MT Developer2/MR Configurator2) (1 license product) CD-ROM	1
	Installation Instructions (this book)	1
	End-user software license agreement	1
	How to register software (ソフトウェア登録のご案内)	1
	License Certificate	1
	Information	1
SW1DNC-MTW2-EA (English version package) (Multiple license product)	MELSOFT MT Works2 product (MT Developer2/MR Configurator2) (1 license product) CD-ROM	1
	Installation Instructions (this book)	1
	End-user software license agreement	1
	How to register software (ソフトウェア登録のご案内)	1
	License Certificate	n <sup>(Note-1)</sup>
	Information	1

(Note-1): The license certificate as much as license is bundled in.

### Precautions

- We do not guarantee any commercially available Microsoft® Windows® Operating System products that are introduced in this manual.
- This software's copyright is owned by Mitsubishi Electric Corporation.
- This software requires one license per computer to be purchased.
- This product (including manual) can be used under the Software License Agreement only.
- We do not take any responsibilities for the consequences of operating this product (including manual).

### ⚠Acknowledgements

- Reprinting or reproducing the part or all the contents of this document in any form for any purpose without the permission of Mitsubishi Electric Corporation is strictly forbidden.
- Although we have made the utmost effort to follow the revisions of the software and hardware, in some cases, unsynchronized matter may occur.
- The information in this document may be subject to change without notice.
- We do not take any responsibility for the virus infection and network failure caused by temporary deactivation of antivirus or security software.

## Operating Environment

Item	Contents
Personal computer	Windows® supported personal computer
Personal computer main body	OS
	Microsoft® Windows® 2000 Service Pack: 4 Windows® 2000 Professional Microsoft® Windows® XP English version (32-bit) Service Pack: 2,3 Windows® XP Professional, Windows® XP Home Edition Microsoft® Windows Vista® English version (32-bit) Service Pack: Up to 2 Windows Vista® Enterprise, Windows Vista® Ultimate, Windows Vista® Business, Windows Vista® Home Premium, Windows Vista® Home Basic Microsoft® Windows® 7 English version (32-bit/64-bit) Service Pack: Up to 1 Windows® 7 Enterprise, Windows® 7 Ultimate, Windows® 7 Professional, Windows® 7 Home Premium, Windows® 7 Starter Microsoft® Windows® 8 English version (32-bit/64-bit) Windows® 8 Enterprise, Windows® 8 Pro, Windows® 8 Microsoft® Windows® 8.1 English version (32-bit/64-bit) Windows® 8.1 Enterprise, Windows® 8.1 Pro, Windows® 8.1
	CPU
	Required memory
	Videocard
Available hard disk space	When installing:Available hard disk space 2GB or more When operating:Available virtual memory space 512MB or more
Disk drive	3.5 inch (1.44MB) floppy disk drive <sup>(Note-1)</sup> CD-ROM supported disk drive
Monitor	Resolution 1024 x 768 pixels or higher
Communicati on interfaces	RS-232 port, USB port, Ethernet port SSC I/F card(A30CD-PCF) <sup>(Note-2)</sup> , SSC I/F board(A10BD-PCF) <sup>(Note-2)</sup>

(Note-1): Required when installing the operating system software from a floppy disk.

(Note-2): The 64-bit edition of Windows® 7/Windows® 8 is not supported.

The 32-bit/64-bit edition of Windows® 8.1 is not supported.

### Precautions

- The following functions cannot be used when the computer is running under Microsoft® Windows® XP, Microsoft® Windows Vista®, Microsoft® Windows® 7, Microsoft® Windows® 8, Microsoft® Windows® 8.1.  
This product may not perform properly when these functions are used.
  - Activating the application with Windows compatible mode
  - Simplified user switch-over
  - Remote desktop
  - Large fonts (Detail settings of screen property)
  - DPI setting other than that of the normal size (Detail settings of screen property)
- In Windows Vista®/Windows® 7/Windows® 8/Windows® 8.1, log in as a user having User authority or higher. Otherwise, you shoule have the administrator level to link to SoftGOT.
- The following functions cannot be used when the computer is running under Windows® 7.
  - Windows XP Mode, Touch
- The following functions cannot be used when the computer is running under Windows® 8/Windows® 8.1.
  - Hyper-V, Modern UI Style, Touch

# Installation

Install MT Developer2 to a personal computer.

## Confirm before installation

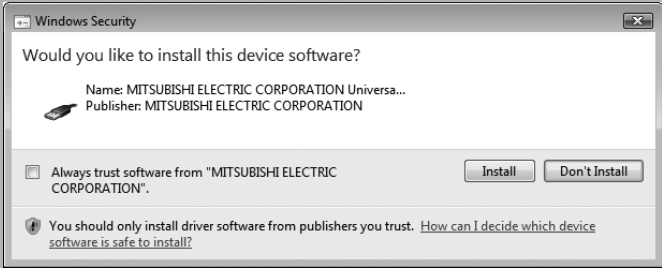
- Log on to a personal computer as a user having an attribute of "Administrator" (Computer administration).
- Terminate all the applications running under Microsoft® Windows® Operating System before installation.
- Install this product before mounting any interface devices for communicating with a personal computer or before connecting a personal computer and a motion CPU via USB interface.
- Deactivate temporarily antivirus or security software before installation.

- Insert the CD-ROM to the CD-ROM drive. Double-click "Setup.exe" (Otherwise, it is displayed as "setup".) in the CD-ROM.
- Following the onscreen instructions, select or enter the necessary information.

### Precautions

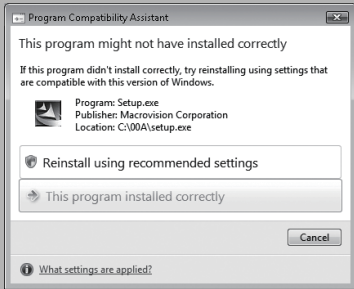
- If the following messages are displayed before completing the installation of this product, the driver must be installed.  
If the driver is not installed, communication may be partly interrupted. In this case, reinstall MT Developer2.

### When using Windows Vista®/Windows® 7/Windows® 8/Windows® 8.1



- Select "Install " and install the driver.

### When using Windows Vista®/Windows® 7/Windows® 8/Windows® 8.1



- Select "This program installed correctly"

### When using Windows® XP



- Select "Continue Anyway" and install the driver.

- If an overwrite install has been done to upgrade the version of MT Developer2 when Windows Vista®/Windows® 7/Windows® 8/Windows® 8.1 is used, the following message may be displayed. In this case, select "This program installed correctly".

# Installing the USB driver

In order to commIn order to communicate with a motion CPU via USB, the USB driver needs to be installed.

## When using Windows® 2000 Professional



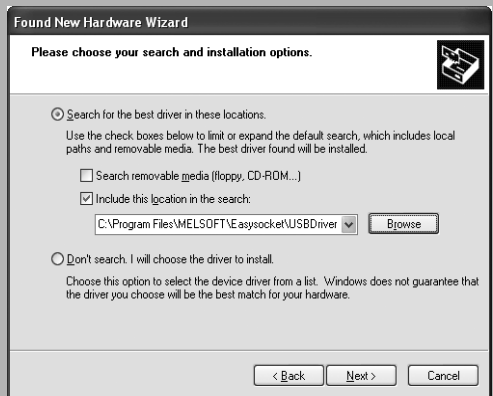
1. Connect a personal computer and a PLC CPU with a USB cable, and then turn on the PLC CPU.
2. The [Welcome to the Found New Hardware Wizard] dialog box is displayed. Click [Next>], and select "Search for a suitable driver for my device (recommended)".
3. The [Locate Driver Files] dialog box is displayed. Check "Specify a location", and click [Next>]. The dialog box shown above is displayed. Set "Easysocket USBdrivers" where MT Developer2 is installed, and then click [OK].  
If multiple MELSOFT products are installed previously, refer to their installed location. ("\\Program Files\MELSOFT\Easysocket\USBDrivers" or "\\[Folder where this product is installed]\Easysocket\USBDrivers")

### Point

If the USB driver cannot be installed, confirm the following settings.  
[Control Panel] - [System] - [Hardware] - [Driver Signing]

- In [Driver Signing], if "Block - Prevent installation of unsigned files" is selected, the USB driver may not be installed.
- In [Driver Subscription], select "Ignore - Install all files, regardless of file signature", or "Warn - Display a message before installing an unsinged file", and execute the USB driver installation.

## When using Windows® XP



### Point

If the USB driver cannot be installed, confirm the following settings.  
[Control Panel] - [System] - [Hardware] - [Driver Signing]

- In [Driver Signing], if "Block - Never install unsigned driver software" is selected, the USB driver may not be installed.
- In [Driver Signing], select "Ignore - Install the software anyway and don't ask for my approval", or "Warn - Prompt me each time to choose an action", and execute the USB driver installation.

## When using Windows Vista®



1. Connect a personal computer and a PLC CPU with a USB cable, and hen turn on the PLC CPU.
2. The [Found New Hardware] dialog box is displayed. Select "Locate and install driver software (recommended)".
3. The [Found New Hardware - Unknown Device] dialog is displayed. Select "Don't search online". Check "Browse my computer for driver software (advanced)", and then set "Easysocket USBDrivers" of the folder where MT Developer2 has been installed.  
If multiple MELSOFT products are installed previously, refer to their installed location. ("\\Program Files\MELSOFT\Easysocket\USBDrivers" or "\\[Folder where this product is installed]\Easysocket\USBDrivers")

## When using Windows® 7/Windows® 8/Windows® 8.1



1. Connect a personal computer and a PLC CPU with a USB cable, and hen turn on the PLC CPU.
2. "Device driver software was not successfully installed" popup window is displayed. Select [Control Panel] – [System and Security] – [Administrative Tools], and select "Update Driver Software" of [Unknown device] in the Device Manager.
3. The [Found New Hardware - Unknown Device] dialog is displayed. Select "Don't search online". Check "Browse my computer for driver software (advanced)", and then set "Easysocket USBDrivers" of the folder where MT Developer2 has been installed.  
If multiple MELSOFT products are installed previously, refer to their installed location. ("\\Program Files\MELSOFT\Easysocket\USBDrivers" or "\\[Folder where this product is installed]\Easysocket\USBDrivers")

# Uninstallation

Uninstall MT Developer2, MR Configurator2 from a personal computer.

1. Execute the MT Developer2, MR Configurator2 uninstallation from the control panel of Windows.

Microsoft®, Windows®, Windows XP®, Windows Vista®, Visio®, Excel®, PowerPoint® and DirectX® are registered trademarks of Microsoft Corporation in the United States and other countries.

Intel®, Celeron® and Pentium® are registered trademarks of Intel Corporation in the United States and other countries.

Ethernet is the registered trademark of the United States Xerox.co.ltd. Ethernet is the registered trademark of Fuji Xerox.

Adobe® and Adobe®Reader® are registered trademarks of Adobe System Incorporated.

SPREAD Copyright® 1999 FarPoint Technologies, Inc.

Other company and product names herein are trademarks or registered trademarks of their respective owners.

Setup Guidance in the CD-ROM is a PDF file. To view the PDF file, Adobe Reader is required. Download from the Adobe Systems website.